



**Public Involvement Plan Meeting
Former Hamlen Parcel
Partial Permanent Solution With Conditions**

Former Raytheon Facility

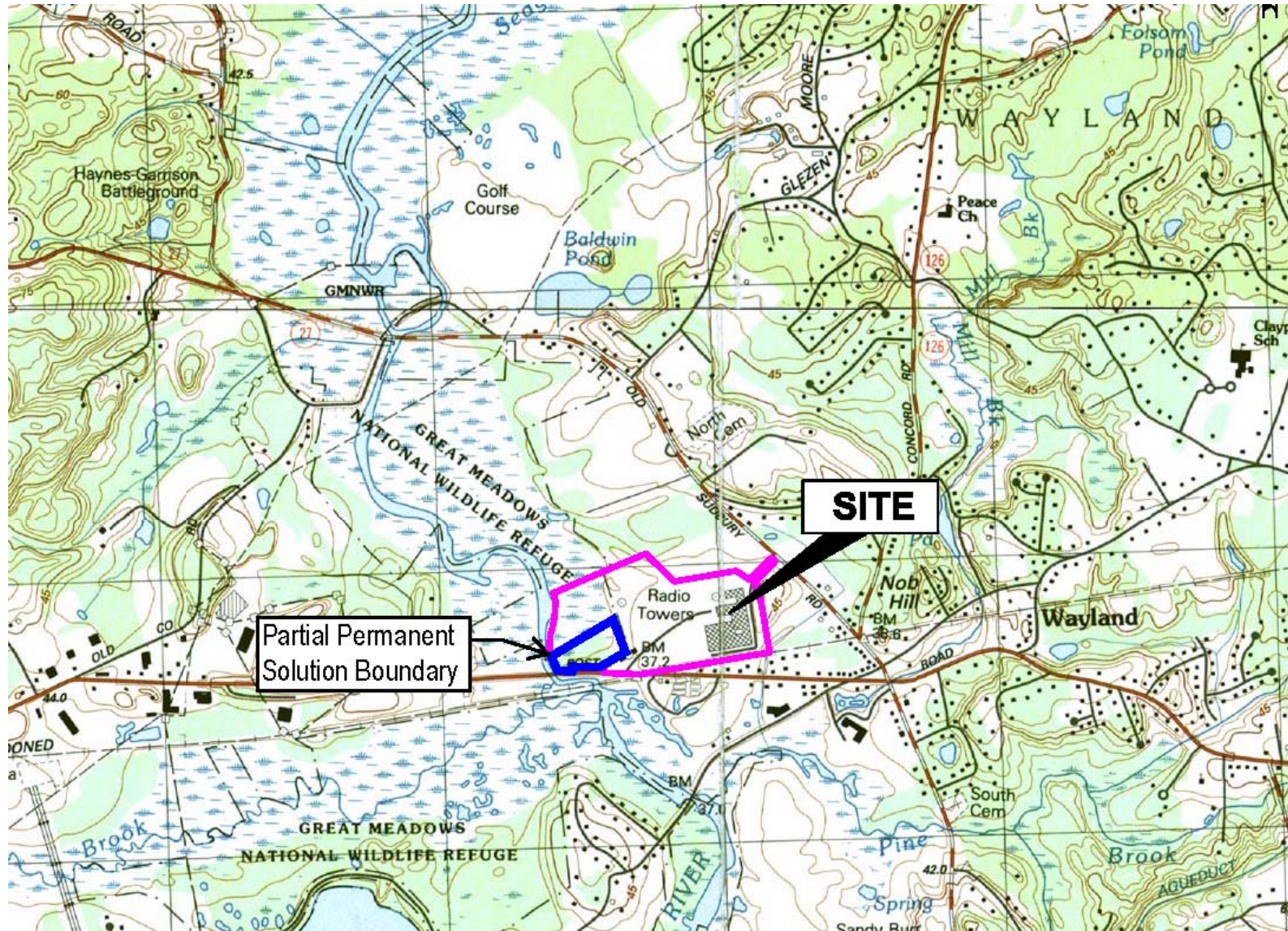
Wayland, MA

17 November 2016

Outline

- Team Introductions
 - Jonathan Hone, Raytheon
 - John Drobinski, LSP, Environmental Resources Management
 - Lyndsey Colburn, PM, Environmental Resources Management
- Regulatory Framework
- Project Overview
 - Wetland Remediation Activities
 - Risk Characterization
 - AUL
 - Permanent Solution
- Q&A

Locus Plan

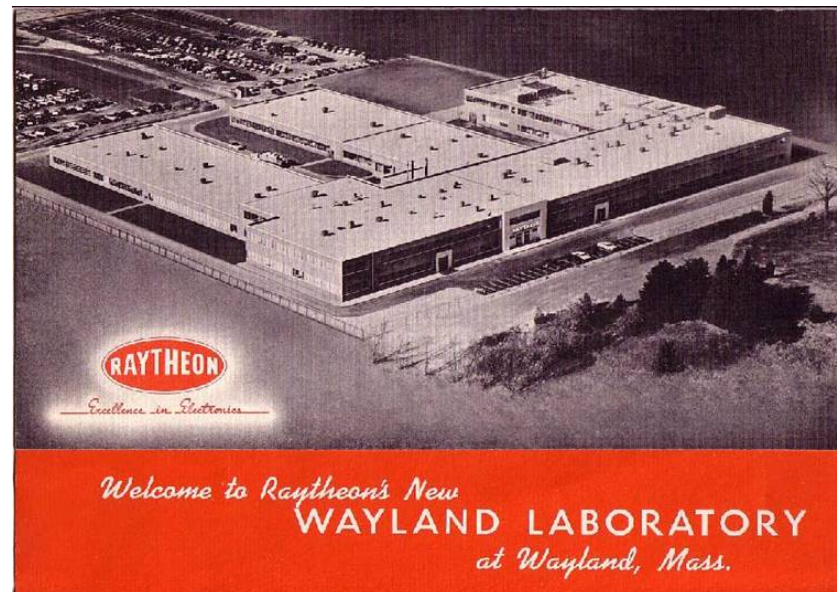


Regulatory Framework

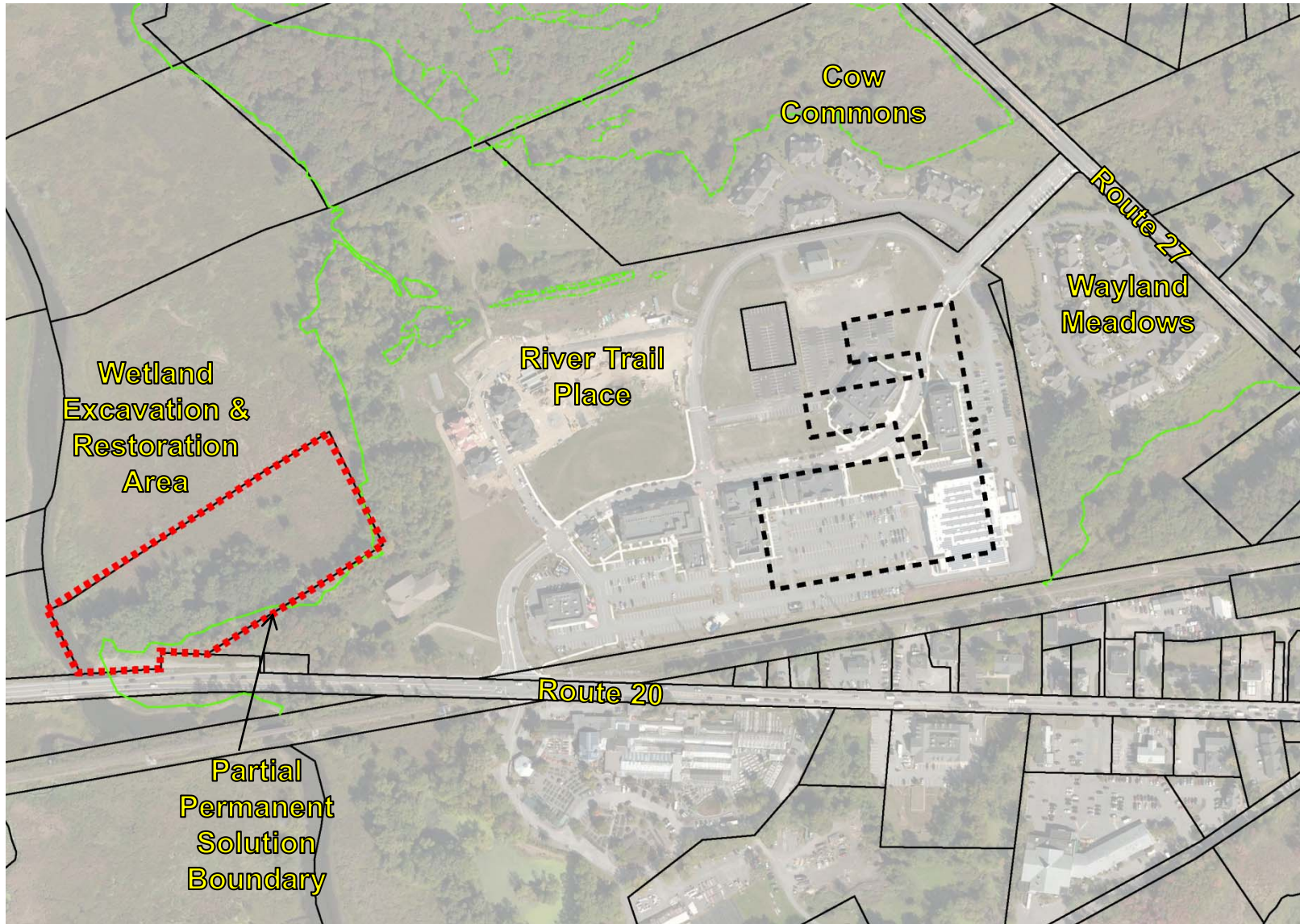
- Ch. 21E of Massachusetts General Laws - Department of Environmental Protection (DEP)
- Release Tracking Number (RTN) assigned to a “release”
- Licensed Site Professional (LSP) provides oversight
 - John Drobinski, Raytheon LSP
 - Ben Gould, Town of Wayland LSP
- Massachusetts Contingency Plan (MCP) 310 CMR 40.0000
 - Phase I - Phase IV - Investigation through remediation
 - **Permanent Solution – Endpoint of MCP process**

Site Overview

- Radar testing and development (1957-1995)
- Contamination discovered in 1996
- Historic Site Contaminants
 - PAHs, PCBs, metals (chromium, copper, silver, arsenic, lead)
- Extensive site investigation conducted
- Approx. 2 acres of soil excavation & wetland restoration completed
- Remedial activities overseen by USEPA and DEP
- Activity & Use Limitations (AUL) implemented at the site
- Former Hamlen Parcel was restored to wetland habitat abutting the Sudbury River
- A “Condition of No Significant Risk” currently exists for the Former Hamlen Parcel
- Partial Permanent Solution to be filed for Hamlen Parcel portion of RTN 3-13302



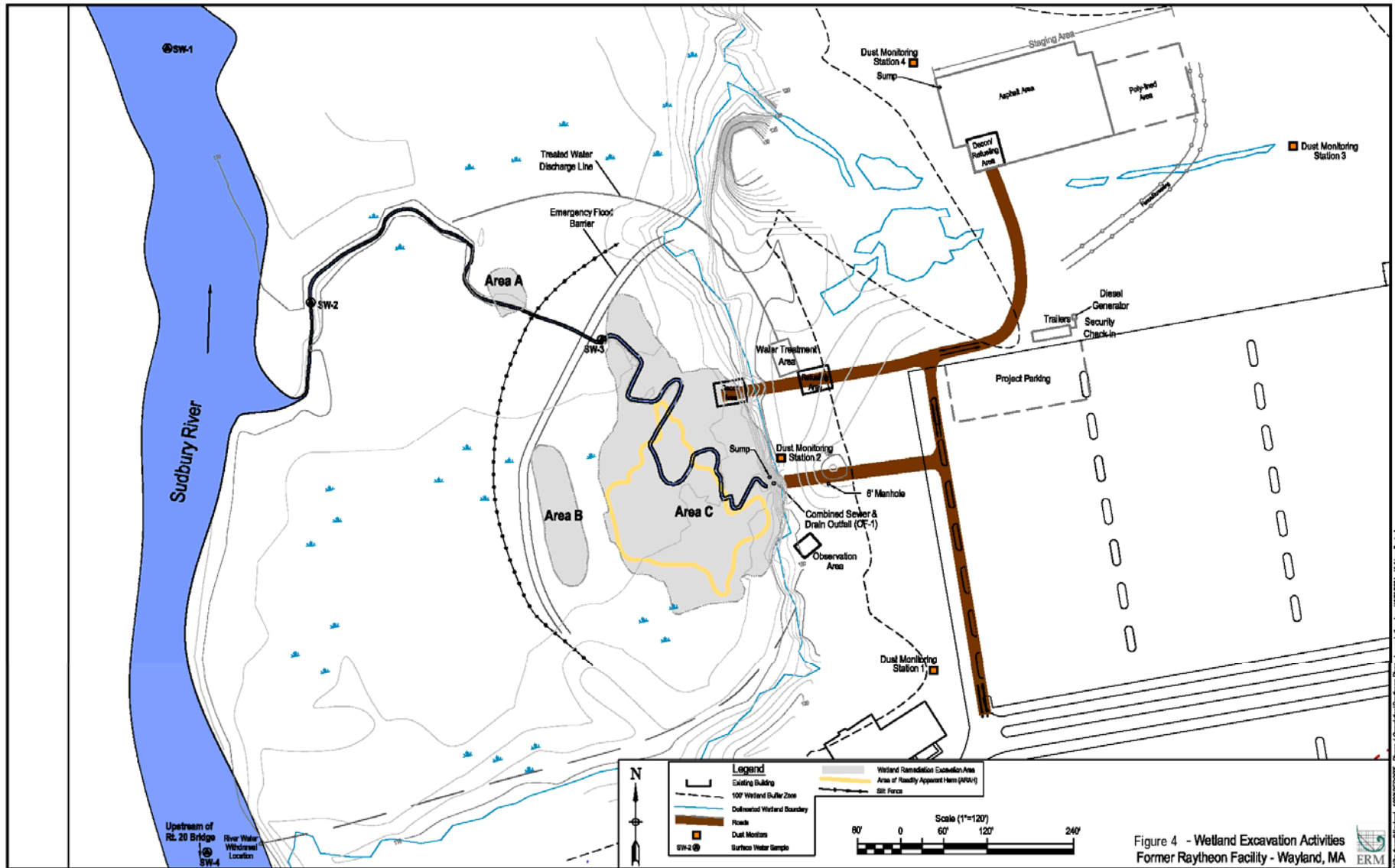
Partial Permanent Solution Boundary



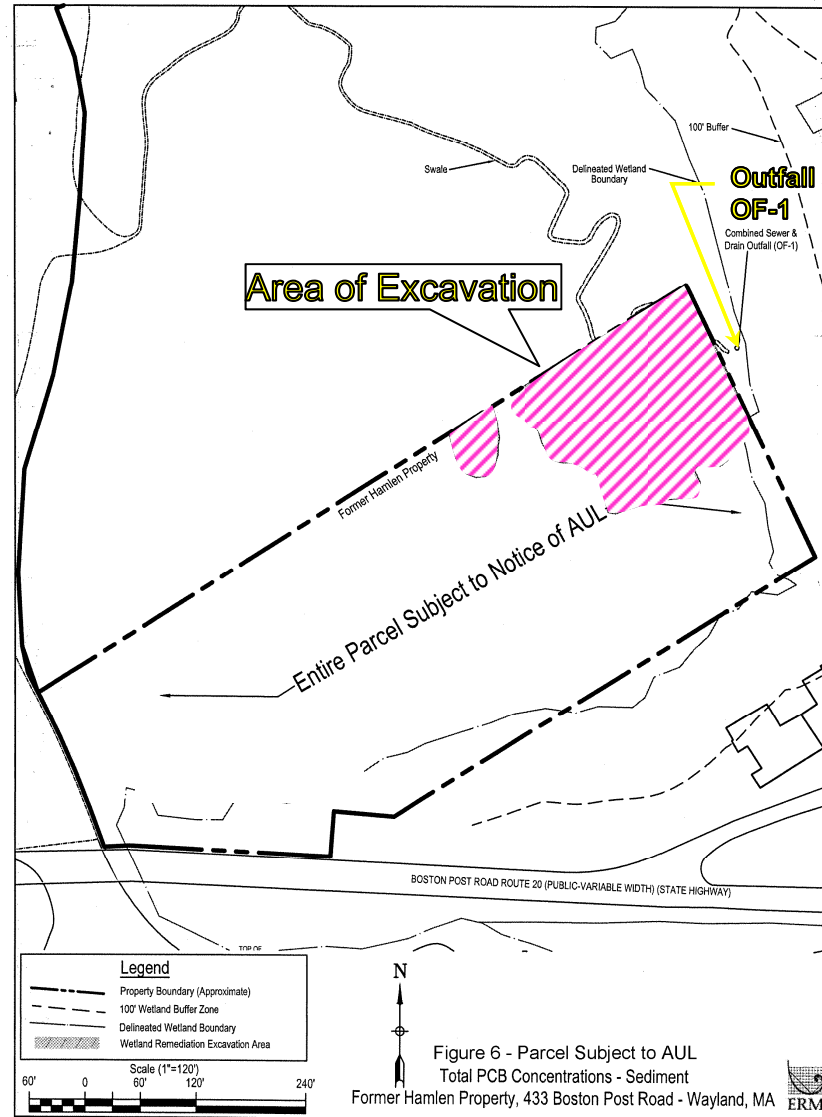
Remediation of Wetlands Area

- Phase I Initial Site Assessment through Phase IV Remedy Implementation Plan completed between 1996 and 2002
- Assessment indicated impacts to top 18” of sediment in wetland adjacent to Sudbury River
- Excavation and restoration of 2.0 acres of wetland completed between October 2003 and October 2004
- Transported approximately 8,000 cubic yards of impacted sediment for off-site disposal
- Achieved target cleanup goals approved by USEPA
- Planted approximately 71,000 wetland plants as part of restoration
- Completed 5 years of wetland monitoring

Former Hamlen Parcel Remediation Activities



Former Hamlen Parcel Remediation Activities



Achievement of Remedial Goals Former Hamlen Parcel

Compounds of Concern	Remedial Goal (mg/kg)	Average Residual Concentration
PCBs	2.0	0.31
PAHs	9.0	1.6
Arsenic	11	8.1
Chromium	332	55.7
Copper	372	57.5
Lead	210	14.7
Silver	13	1.6

- TSCA Risk-Based PCB Remediation Final Report submitted May 2008, including a site-specific risk characterization (Method 3)
- Risk characterization reviewed and confirmed as part of Permanent Solution
- AUL recorded in January 2006

Wetlands Restoration



**Wetland Following
Excavation &
Replanting
(June 2004)**

**Established Native
Vegetation
(July 2009)**



Former Raytheon Site Overview



Questions?

- Site documents, including this presentation, are available at the information repository Wayland Board of Health and extranet web site

<http://raytheon.erm.com>

- Public Comment Draft Partial Permanent Solution available for review and comment through 8 December 2016
- Comments may be submitted to:

Raytheon Company
c/o Chip Burkhardt
50 Apple Hill Drive
Tewksbury, MA 01876
Louis_j_burkhardt@raytheon.com

ERM
c/o Lyndsey Colburn
One Beacon Street, 5th Floor
Boston, MA 02018
Lyndsey.colburn@erm.com