



## **Mass Central Rail Trail**

Great Progress being made by DCR's contractor. Please see the below rules of the trail and some recent pictures.

### **Mass Central Rail Trail - Rules of the Trail**

The base layer of pavement has been installed and the top layer is anticipated to be installed within the next two weeks. Remember to stay clear of fresh pavement in order to avoid injury to self and animal and to prevent damage to the pavement/trail.

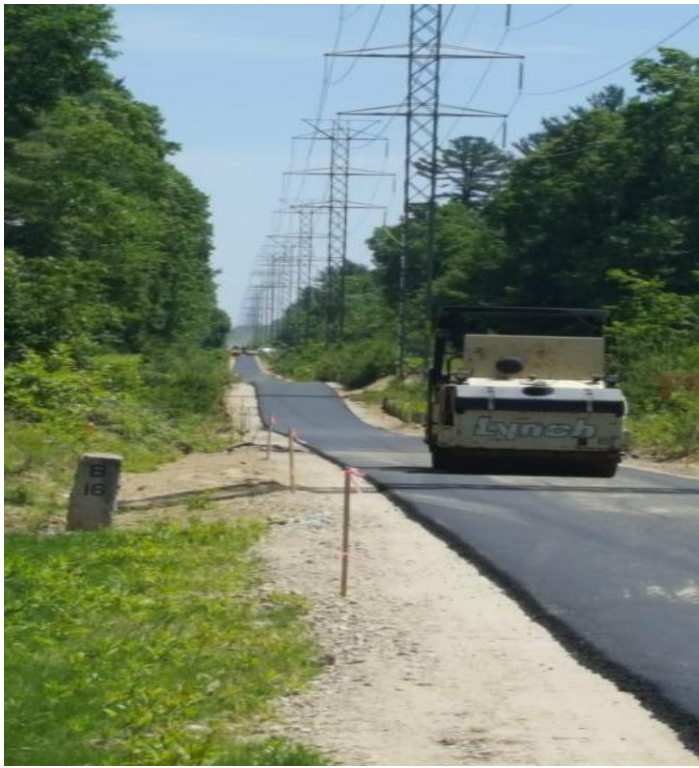
The latest developments on the trail are bringing more users to the area, but construction crews are still on site working on other elements of the rail trail, such as fencing and cattle-pass preservation. The area is still an active construction site.

Because there is growing use of trail use and in advance of the rail trail officially opening to the public we wish to share the rules of use of this new recreational path. The rail trail is owned by the Department of Conservation and Recreation (DCR). It is not a town-owned trail. With that, trail users must heed the following:

- all dogs **MUST** be leashed when on the rail trail - this is a state park rule
- dog owners **MUST** clean up after their dogs and take the waste bag home to dispose of properly
- this is a multi-use trail meaning bicyclists, joggers, walkers, dogs and horseback riders need to **SHARE** the trail.

DCR is in the process of stabilizing the trail banks (the shoulders of the trail). Please stay off the loam and growing grass until those shoulders are stabilized.

Thank you for your cooperation!



Sincerely,

Larry Kiernan  
larrykiernan04@gmail.com